



# ICT Services

<http://www.minlatonds.sa.edu.au/ict-services>

## Installing Office 365

1. Go to <https://www.office.com/> and if you're not already signed in, select **Sign in** using your **Learnlink Email Account**.

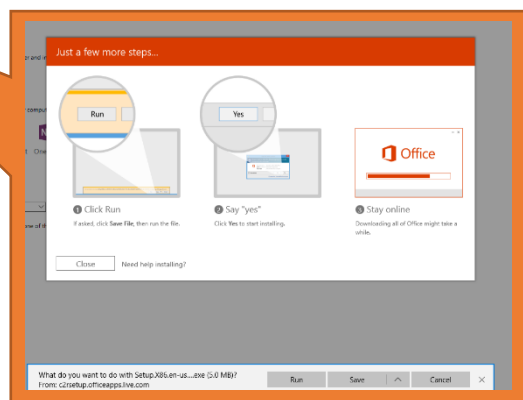
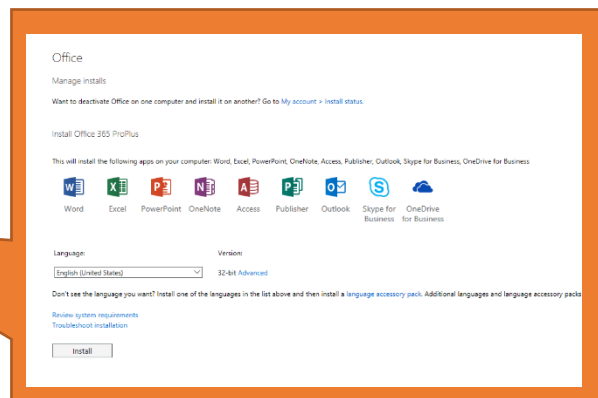
(you will be redirected to the **learnlink sign in page**)

2. From the Office 365 home page select **Install**.

(If you see a different start page, go to <https://aka.ms/office-install> )

3. Follow the on screen prompts to run and install Office 365 on your computer

4. When installation is complete Open "Word" and sign in using your **Learnlink account**



*If you have any issues installing please contact Aaron on (08) 8853 2346 (Monday-Friday during school times)*